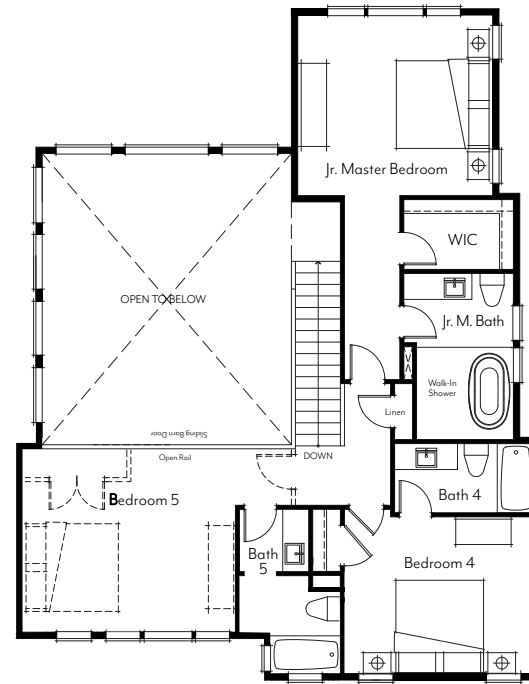
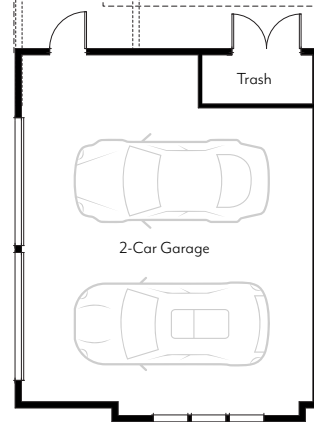


MAIN LEVEL
 2 Bedrooms
 2.25 Baths
 Covered Entry
 Covered Rear Patio



UPPER LEVEL
 3 Bedrooms
 3 Baths



GARAGE
 Trash Enclosure
 Covered Breezeway & Sidewalk

Highlights :

- 2,850 square feet
- 5 bedrooms
- 5-1/4 bathrooms
- Grand entertaining areas
- Convenient main floor master
- Junior master suite
- 3 Ensuite bedrooms
- Oversized 2-car garage

Minor differences exist between the Mountain and Contemporary floorplans. Please see Trailside representative for specific details.

updated: 05.01.18



Plans and elevations are artist's renderings only, may not accurately represent the actual condition of a home as constructed, and may contain options which are not standard on all models. We reserve the right to make changes to these floor plans, specifications, dimensions, designs and elevations without prior notice. Stated dimensions and square footage are estimated and should not be used as representation of the home's actual size.