



MOUNTAIN LODGE ARCHITECTURAL INSPIRATION

- Large picture windows provide stunning views and natural light
- Spacious entry/mud room
- Vaulted ceilings
- Recreation room for extra elbow room
- Spacious kitchen with lavish island
- Large master shower

FOUR-SEASONS CONSTRUCTION

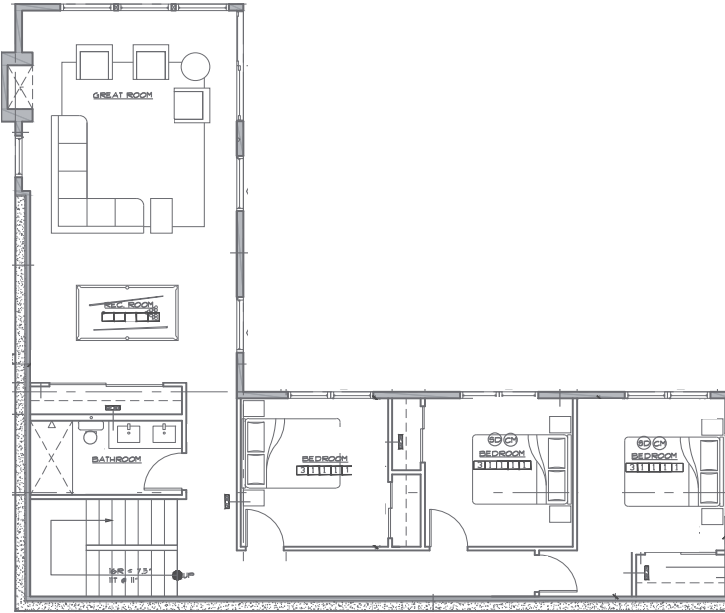
- Energy-efficient electric forced air heat
- Cozy gas fireplace with modern rustic cladding
- 2-car detached garage

RUGGEDLY-ELEGANT FINISHES

- Sophisticated mountain modern finishes
- Large sliding doors open to panoramic views
- Wide plank floors
- Custom soft close cabinetry
- Stainless steel gourmet appliances
- Designer tile selections

THE HAWKINS

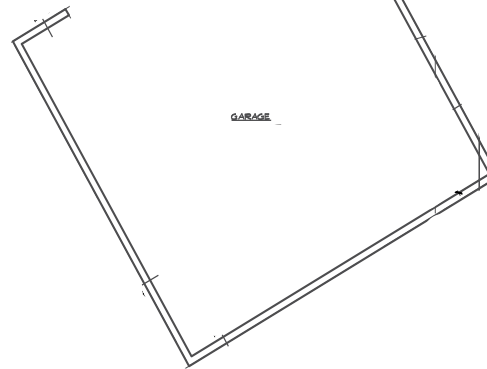
- 2,915 sq. ft.
- 4 bed + Rec Room, 2 bath
- 2-car detached garage



LOWER LEVEL



MAIN LEVEL



TRAILSIDE HOMES™

316 W First St
Cle Elum, WA 98922 discover@trailsidehomes.com 509 674 8190

Images, floorplans & details are artist's illustrations & approximations that may reflect upgrades & specifications which may change.
Please inquire within to learn about available options & upgrades for this home.

TrailsideHomes.com